

INTENSSS-PA

Regional Living Lab

Castilla y León, Spain

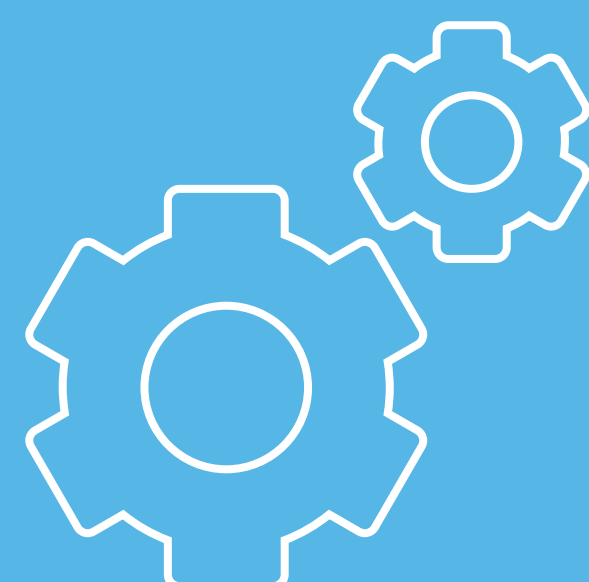


KEY PARTNERS

Regional Government
Municipalities
Regional Energy Agency
Public regional company of spatial development
Research organizations and University
Social representatives

MOTIVATION

Create a strong network to gather expertise and improve decision-making processes



VALUE CREATION

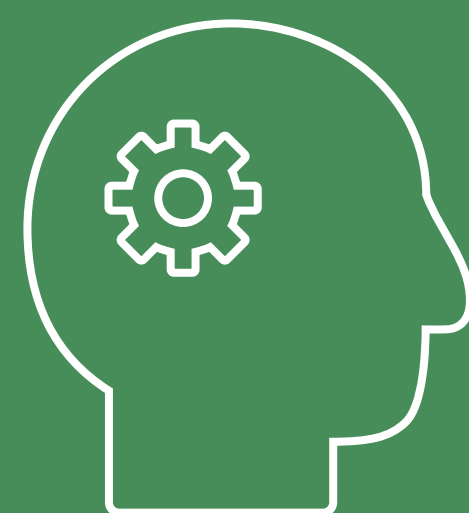
A platform for stimulating shared and individual goals of the planning process

Increase community awareness and improve acceptability of energy plans and projects

Facilitate compromised decision making through participatory processes

Enhance efficiency of Governance by integrating planning and decision making

A basis for social innovation and business networking

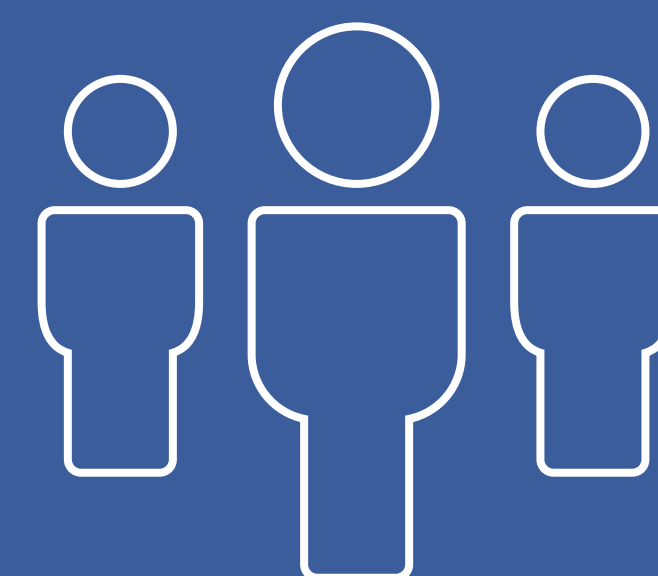


KEY ACTIVITIES

Actions facilitating co-planning, monitoring and brainstorming in the integrated sustainable energy planning process

Maintain the RLL constellation between participants

Actions ensuring awareness and participation of stakeholders

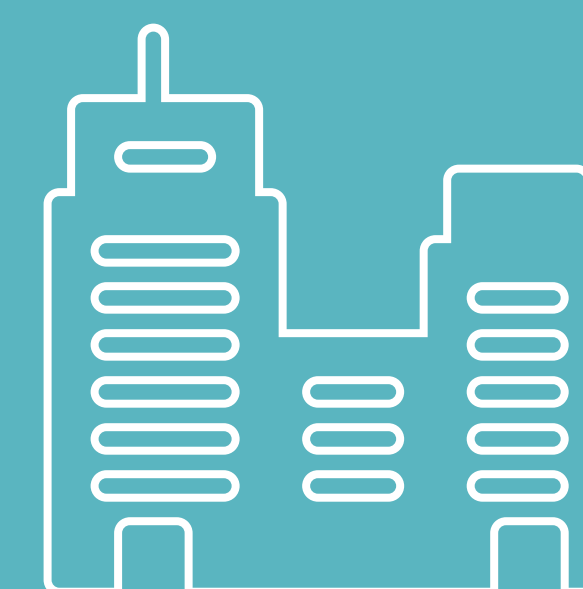


KEY RESOURCES

The human resources from the stakeholders

Financial resources based on public investment

Facilitating access to funding from national and international financing institutions



SOCIETY SEGMENTS

Public authorities as the most important stakeholders

Professional experts with the required expertise and knowledge to implement solutions. Citizens as end-users and target of the impacts

Impacting socio-economic activities of community stakeholders through co-planning

Enhancing skills and know-how of decision-makers and community stakeholders through the co-planning process



SOCIAL STAKEHOLDERS RELATIONSHIPS

Systematic collaboration between the Regional authorities and community actors in terms of identifying and prioritizing integrated sustainable energy planning priorities

A platform for effective communication between community, stakeholders and all levels of governance; aiming to disseminate information, increase awareness, build trust, and create consensus