

INTENSSS-PA

Regional Living Lab

City of Groningen, Netherlands

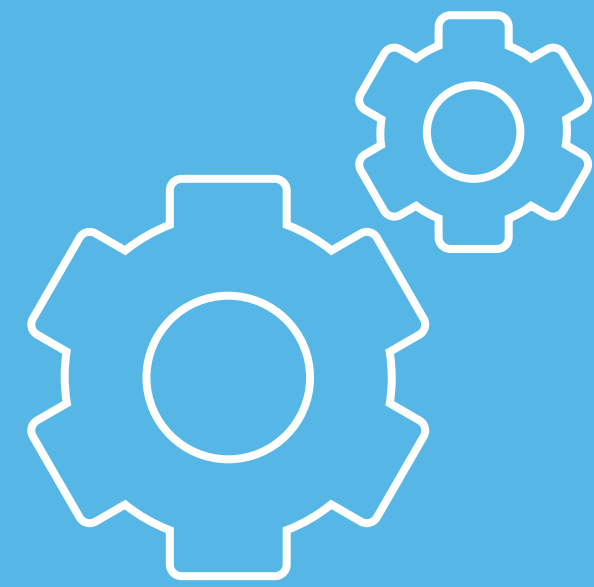


KEY PARTNERS

Municipality
Regional Government
Citizen Neighborhood Cooperation
Energy Information Desk
Regional Sustainable Energy Agency
Research organizations and University
Social Housing Offices
Network Operators
Citizen Support Organizations

MOTIVATION

Create and develop a Neighborhood Energy Plan for the district of Paddepoel, and set up a strategy to develop these plans for all other neighborhoods in the city of Groningen.



VALUE CREATION

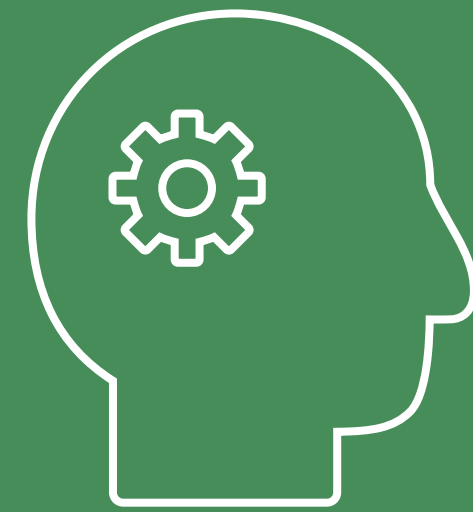
A platform to bring together all relevant stakeholders in planning the energy transition in the neighborhood.

A vehicle to create a roadmap towards an energy neutral neighborhood in the nearby future.

Increase community awareness and improve acceptability of energy plans and projects.

Increase knowledge of different interests of different stakeholders.

Facilitate compromised decision making through participatory processes.



KEY ACTIVITIES

Realizing an Neighborhood Energy Plan.

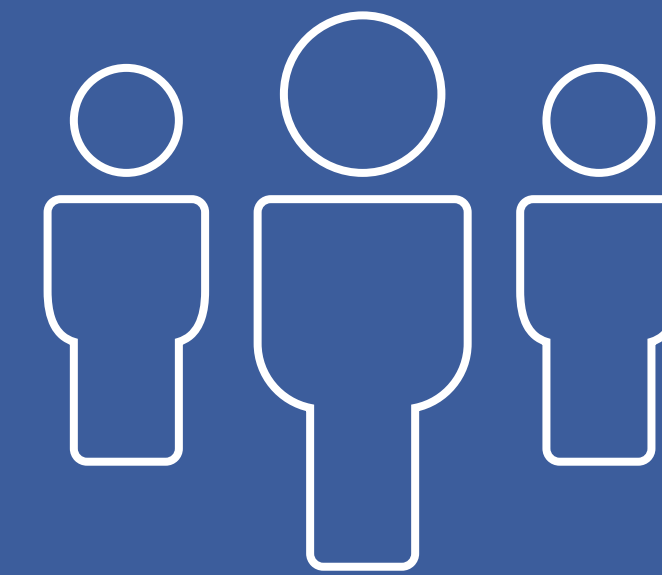
Set an example for other neighborhoods.

Integrated Sustainable Energy Planning.

Integrated Sustainable Plan Implementation Support & Monitoring.

Knowledge transfer activities. Support and enhancement of the RLL through the signature of a cooperation agreement.

Actions ensuring awareness and participation of stakeholders.

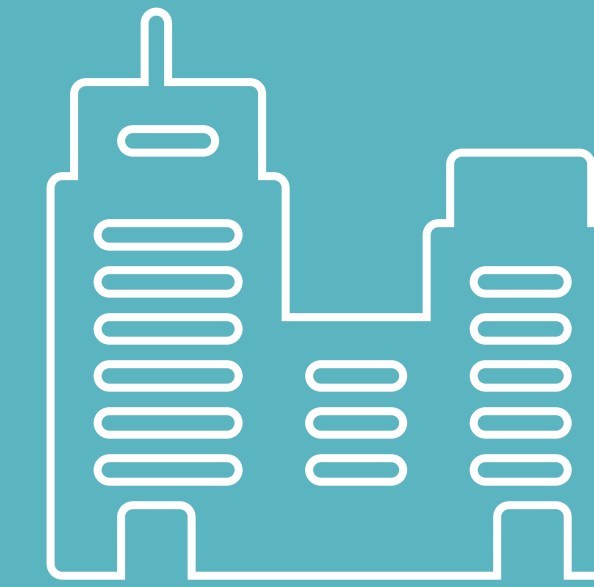


KEY RESOURCES

Provision in kind from all stakeholders.

Financial resources of some of the stakeholders.

Financial resources from local, national and international Initiatives & programs.



SOCIETY SEGMENTS

Public authorities to gain Stakeholder Groups trust & engagement to energy transition on a neighborhood level.

Professional experts with the required expertise and knowledge to implement solutions.

Citizens / the community as end-users and target of the impacts have an important say in energy planning.

Enhancing skills and know-how of decision-makers, experts and community stakeholders through the co-planning process of the public – private – people partnership.



SOCIAL STAKEHOLDERS RELATIONSHIPS

Support Public Authorities to meet planning requirements through multilevel governance. **A platform for co-planning.**

Public-Private-People exchange of ideas and knowhow towards integrated solutions for sustainable energy projects and innovative business models.

Support the implementation of top-down energy policies by mobilizing and engaging bottom-up energy initiatives.

A platform for effective communication between community, stakeholders and all levels of governance; aiming to disseminate information, increase awareness, build trust, and create consensus on future energy plans.